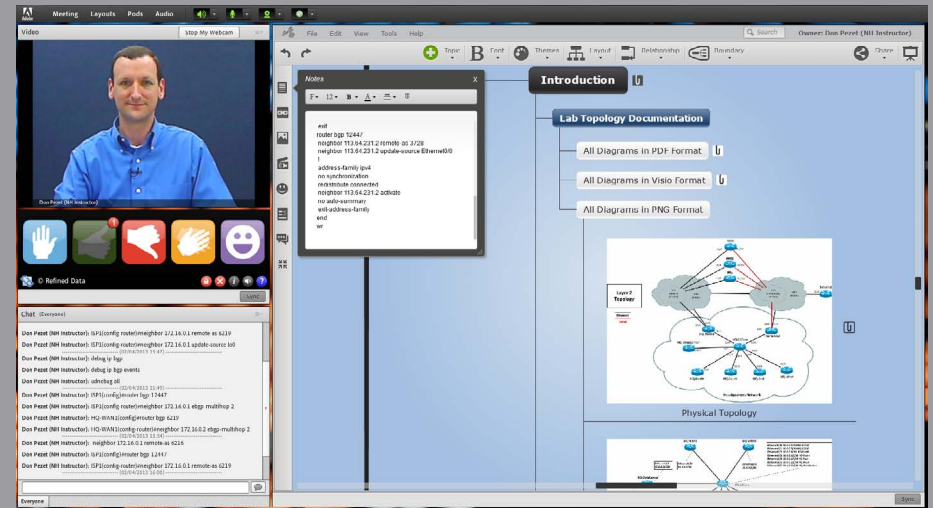


# Adobe® Connect™ & New Horizons Computer Learning Centers



## Innovative, engaging IT eLearning

At the North Florida franchise of New Horizons Computer Learning Centers—part of an international network of independent training providers—Adobe Connect is being used in exciting new ways across on-site and virtual IT training programs. New Horizons offerings now feature Mindomo, a custom meeting pod that integrates seamlessly into the Adobe Connect experience, enabling eLearners and instructors to dynamically collaborate inside an intuitive interface.

Exclusively distributed by Adobe partner eSyncTraining, the Mindomo pod delivers structure and hierarchy to brainstorming and white boarding discussions within Adobe Connect, adding a real-time collaborative environment to New Horizons' award-winning courses and certificate programs. "The Mindomo mind mapping pod enables instructors to showcase and simplify technical content in a way that had previously been impossible. This can now be done on-the-fly in a hierarchical manner that not only enhances the Adobe Connect experience in real time, but makes content readily available for replay," says Don Pezet, training manager at New Horizons of North Florida.

*"Having Mindomo mind mapping capabilities inside Adobe Connect saves time, enables interactive collaboration with ease, and gives our company a distinct advantage in a competitive IT training marketplace. It's among the best Adobe Connect extensions yet."*

## Advanced conceptualization and collaboration

Keeping users engaged is one of the greatest challenges every trainer faces when preparing and delivering course content. Mind mapping inside Adobe Connect enables New Horizons instructors to provide continuous, compelling opportunities for deeper engagement through interactive collaboration. Whiteboarding as a group, rapidly creating slides on the fly, and quickly summarizing concepts are easy to do inside the easy-to-learn, intuitive Mindomo mind map interface.

For example, while teaching an advanced networking class, Pezet fielded a question about how to configure a certain router. Rather than share his desktop, fire up a browser, and navigate to an outside link, Pezet accomplished all of the above inside one clean mind map workflow while students were occupied with a poll. Inserting the router configuration into the mind map pod allowed students to copy and paste it anywhere, which would not be have been possible using an external link.

Slides and cumulative content from other instructors are organized in one mind map throughout multi-session classes, so regardless of which day something happened, students can go right to it during replay. "The indexing capability in Adobe Connect is great for accessing information in a single session recording, but for multi-day classes, Mindomo really cinches it. We can't get this level of extensibility from any other web conferencing solution," says Pezet. Additionally, sharing within reusable mind maps among instructors continuously adds value to the New Horizons curriculum.

"Having Mindomo mind mapping capabilities inside Adobe Connect saves time, enables interactive collaboration with ease, and gives our company a distinct advantage in a competitive IT training marketplace," says Pezet. "It's among the best Adobe Connect extensions yet."

### For more information

[www.adobe.com/products/adobeconnect](http://www.adobe.com/products/adobeconnect)

[www.adobe.com/products/adobeconnect/extend](http://www.adobe.com/products/adobeconnect/extend)

[www.esynctraining.com](http://www.esynctraining.com)



Adobe

Adobe Systems Incorporated  
345 Park Avenue  
San Jose, CA 95110-2704  
USA  
[www.adobe.com](http://www.adobe.com)

Adobe, the Adobe logo, and Adobe Connect are either registered trademarks or trademarks of Adobe Systems Incorporated in the United States and/or other countries. All other trademarks are the property of their respective owners.

© 2013 Adobe Systems Incorporated. All rights reserved.

5/13

