



First LTI Solution for Adobe Connect

eSyncTraining's Learning Management Systems integrations offer educators the solutions to simplify their workflows while enhancing the learning experience. Adobe Connect allows for a more engaging meeting space for students and instructors while feeding data back into your LMS and taking care of the details for you. The eSyncTraining LMS for Adobe Connect is easy to integrate and can be used on an individual course and LMS-wide level. Universities, businesses, and organizations holding live virtual meetings benefit from:

SINGLE SIGN ON

Save yourself from time and frustration coordinating platforms! Sign-on once in Adobe Connect and your LMS, allowing you to schedule and hold classes, study groups, and office hours with ease.

CLASS ROSTER SYNCHRONIZATION

Enjoy an automatic synchronization and logging of student and assistant presence, eliminating the need to manually track meeting participants. Gain the freedom to focus on what matters most!

ROLES AND PERMISSIONS

Users are automatically mapped to roles such as teacher and student. For more specialized needs, create custom roles with a fine-tuned set of permissions and functions.

INSTANT & SECURE ACCESS TO RECORDINGS

Access your files and documents from a single place! Course meetings, recordings, and files are available for student and teachers

TABLET SUPPORT

Gain the freedom to administer virtual classrooms, study groups, and office hours from almost anywhere. Deliver quizzes and surveys on your tablet and even utilize add-ons and pods such as EduGame Cloud.

EASILY REUSE MEETING ROOMS

Adobe Connect meeting rooms can be utilized over and over and even across platforms, ensuring persistence and consistency and an easy set up process.

BRANDED REPORTING

Download and save individual meeting reports by session and user, allowing you to further analyze data, compare them against other assignments and years, and back them up for safekeeping.

REAL-TIME QUIZZES AND SURVEYS

Scores and responses gathered from Adobe Connect Meetings are automatically recorded into your LMS, offering a more convenient and error-free way of round trip management of your gradebook.

OUR LTI IS INTEGRATED WITH:



Edit LMS Support

General Settings Support **Roles** Downloads Edit: Yes

LMS Role	AC Role
Student	Participant
Teacher	Host
TA	Host
Designer	None
Observer	Participant

Role	AC Role	
testhost	Host	[-]
testpresenter	Presenter	[-]
testparticipant	Participant	[-]

Add Custom Role ⓘ Any custom role not defined in this list will be mapped to the participant in Adobe Connect

Cancel Save

Meetings List > Participants

Study Group Information Participants Settings

Canvas Available Users (11)

- Students (10)
- Jack Smith
- Jackie Smith
- Jeff Smith
- Jennifer Smith
- Jessica Smith
- Jill Smith
- Jim Smith
- Joann Smith

Adobe Connect Participants (7)

- Host (1)
- Jeff Dicker
- Participants (6)
- Brandon Judy
- Jim Smith
- Kakoyto Chel
- Melissa Sieben
- Olga Pavlovskaya
- matt baker

Search

Sync Users Add Add Guest Set User Role Remove

Participant
Presenter
Host

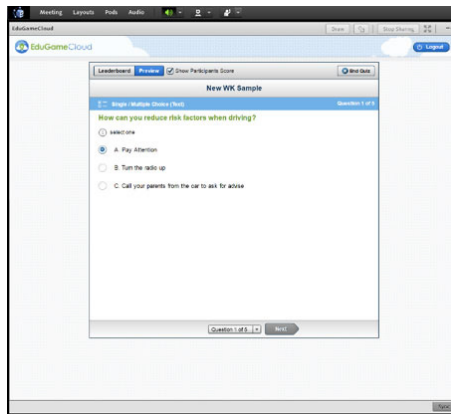
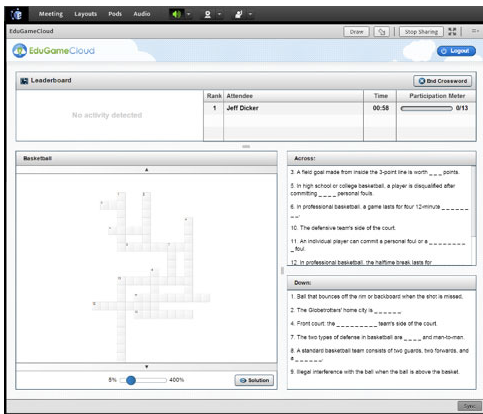
Created by eSyncTraining

EduGame Cloud – A Powerful Adobe Connect Add-On

Create, administer, and score quizzes, tests and surveys in a more dynamic and automated way

Integrating Adobe Connect with your Learning Management System opens the door to a host of additional capabilities and features. EduGame Cloud, a custom Adobe Connect pod, is an innovative suite of educational tools and student management resources producing a more interactive and engaging online classroom experience. Create quizzes, test, and surveys and administer them live in Adobe Connect meeting rooms. Analyze responses in real-time, allowing instructors to monitor and support students in a whole new way. EduGame Cloud also automatically transcribes each student's responses and scores directly into your LTI grading module, reducing errors and making your job easier!

Additional add-ons to EduGame Cloud include Smart Whiteboard, allowing you to use on-screen displays as an interactive canvas, and a Closed Captioning service with real-time Google Translate.



Call **1-800-348-6110** or email us at sales@esynctraining.com to ask questions, watch a live demo, or give the Adobe Connect LMS integration a try.

ABOUT ESYNCTRaining
eSyncTraining, a Canvas, Blackboard, Kaltura, Brightcove, and Adobe Connect Partner, delivers cutting-edge technology solutions to help individuals and organizations better connect, interact and engage online. Working with companies from start-ups to Fortune 500 firms, we build custom applications, tools and platforms that solve critical problems for our clients and enable them to be more successful. We specialize in learning management systems (LMS) and interactive online applications including custom pods, API integration for Adobe Connect, and eLearning courses and training.

ABOUT LEARNING MANAGEMENT SYSTEMS
Learning management systems (LMS) assist instructors by providing an easier way to administer e-learning courses and training programs. LMS software assists in all aspects of the learning process including classroom administration, documentation, tracking, grading, reporting, and the electronic delivery of learning and educational coursework.

ABOUT ADOBE CONNECT
Adobe Connect web conferencing enables organizations to improve productivity and drive critical business processes through enabling instant collaboration, easy access to key documents, rich interactivity, and the flexibility to tailor or embed the meeting experience directly within specific business workflows.